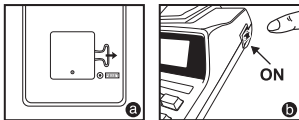


## Contents

Before Starting .....	P.1
General Maintenance .....	P.1
Decimal Point Selector Switch .....	P.2
Rounding Switch .....	P.2
Grand Total / Tax Rate Set Switch .....	P.2
Print / Item Count Switch .....	P.2
Tax Calculation Function .....	P.3
Business Sales Calculation .....	P.3
Currency Conversion Function .....	P.3
Important Functions to Remember .....	P.4
Clock & Calendar Function .....	P.4
Overflow .....	P.4
Specifications .....	P.5
Inserting Printing Paper .....	P.5
Replacing the Ink Roller .....	P.5
Backup Battery .....	P.6
Calculation Example .....	P.31-38

## Before Starting

- 1) Remove the insulation tape at the back of calculator and press [RESET] key before use. (Figure a)
- 2) Turns power on. (Figure b)



## General Maintenance

- 1) Do not use or leave the calculator under direct sunlight. Press subject to rapid temperature changes, high humidity, dust and dirt should also be avoided.
- 2) Use a dry cloth to clean the casing of the unit. Do not use water or detergents.
- 3) Activate the printer when the paper roll is loaded.
- 4) Avoid using the calculator in places where there are iron filings, as this may affect the electrical circuits of the calculator.
- 5) Do not place anything on top of the machine, particularly on top of the printer mechanism.
- 6) Turn the calculator off before removing the plug from the electrical outlet.
- 7) Pull the main plug out of the wall socket if you want to switch off the main power or in case of electrical fault (i.e. smoke), disconnect the plug from the electrical socket outlet immediately.
- 8) The AC outlet must be located near the equipment and easily accessible.
- 9) Under the environment with electrostatic discharge, the sample may malfunction and require user to reset the sample.

## Decimal Point Selector Switch



– Used for designating the decimal point position (+ 0 2 3 4 F) for calculated results.



**+ (Add-Mode)** – Addition and subtraction functions are performed with an automatic 2-digit decimal. It is convenient for currency calculations.



**F (Floating Decimal Point)** – All effective numbers up to 12 digits are printed or displayed.

## Rounding Switch






– Used for round-up [  ], round-off [5/4], or round-down [  ] to the pre-selected decimal digits in the result.

## Grand Total / Tax Rate Set Switch

### GRAND TOTAL



– When the calculations are performed with the GT switch set to "ON", the totals are accumulated in the grand total memory. Each time  is pressed, the subtotal number is printed with the symbols G+. When  is pressed, the intermediate grand total is printed with the symbols G◇. Press  successively to clear the grand total followed by the symbols G✱.

### TAX RATE SET



– Set switch to "TAX RATE SET" for setting or recalling the TAX rate.

## Print / Item Count Switch

### PRINT OFF



– Entries and results will appear on the display, but will not be printed out.




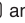


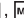

### PRINT ON



– Entries and results will appear on the display and will be printed out.

### ITEM



– Set switch to "ITEM" to count the number of times the , ,  and  keys have been pressed. The item count will be printed on the left hand side of the paper roll (up to 999 times) when the , ,  or  keys are pressed.

## Tax Calculation Function

**TAX +** **Add Tax Key** – Used for adding the tax amount to the displayed figure.

**TAX -** **Deduct Tax Key** – Used for deducting the tax amount from the displayed figure.

## Business Sales Calculation

**COST** **SELL** **MARGIN** – Used for calculating the cost, selling price and profit margin value. Enter the value of any 2 items to obtain the balance value item. (e.g. enter the value of the cost and the selling price to obtain the profit margin %.)

## Currency Conversion Function

**CE**  
**C** **RATE**  
**SET** **Store the Currency Rate** – Press **CE**  
**C** , **RATE**  
**SET** and hold for 1 second, then enter the currency conversion rate and press **CE**  
**C** to store the rate.

**CE**  
**C** **LOCAL** **Recall the Currency Rate** – Press **CE**  
**C** , **LOCAL** to recall the stored currency conversion rate.

**LOCAL** – Press **LOCAL** to convert currency figure displayed from **LOCAL** to the **CE**  
**C** .

**CE**  
**C** – Press **CE**  
**C** to convert displayed figure from **CE**  
**C** to **LOCAL** .

- For rates of 1 or greater, you can input up to six digits. For rates less than 1 you can input up to 7 digits, including 0 for the integer digit and leading zeros (though only six significant digits, counted from the left and starting with the first non-zero digit, can be specified).

## Important Functions to Remember



**Clear Entry and Clear Key** – Press once to clear last entered value. Press again to clear all entered values except memory. This key is also used for clearing the overflow error.



**Equal Key** – Used for obtaining multiplication and division results.



**Non-Add/Subtotal Key** – Used for printing out information which does not affect the calculation such as dates and serial numbers. Figure are printed on the left-hand side of the paper. It is also used for obtaining intermediate results.



**Total Key** – Used for obtaining addition and subtraction results.

## Clock & Calendar Function



– Used to switch between calendar or clock mode.



– Used to switch between 12 or 24 hour at clock mode.



– Used to set the date and time in calendar & clock mode.



– Used to switch between AM or PM at clock mode time setting.



– Used to select date format between "YYYY/MM/DD", "DD/MM/YYYY" or "MM/DD/YYYY" at calendar mode.

- **Note:** If all the power sources and backup battery "CR2032" are disconnected, the clock, calendar, currency rate and tax rate will be cleared. In this case, please set the clock, calendar, currency rate and tax rate again.

## Overflow

In the following cases, when "E" is displayed, a dotted line is printed, the keyboard is electronically locked, and further operation is impossible. Press to clear the overflow. The overflow occurs when:


1. The result or the memory content exceeds 12 digits to the left of the decimal point.
  2. Dividing by "0".
  3. The sequential operation speed is faster than the calculation processing speed. (Buffer Register Overflow)
- Electromagnetic interference or electrostatic discharge may cause the display to malfunction or the memory, currency rate and tax rate to be lost or altered. Should this occur, use the tip of a ballpoint pen (or similar sharp object) to press the [RESET] button on the back of the calculator. After resetting be sure to set the calendar, clock, currency rate and tax rate again.

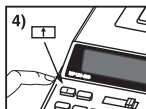
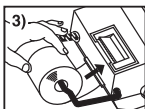
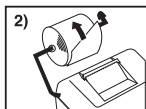
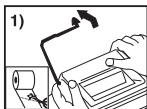


## Specifications

Power Source: AC200V— AC240V, 50/60Hz  
Operation Temperature: 0°C to 40°C (32°F to 104°F)  
Calculating Capacity: 12 digits maximum  
Dimension: 294mm (L) x 210mm (W) x 74mm (H) /  
11-9/16" (L) x 8-1/4" (W) x 2-15/16" (H)  
Weight: 1054g (37.18 oz)  
(Subject to change without notice)


## Inserting Printing Paper

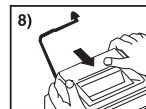
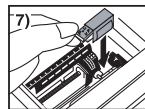
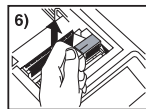
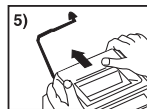
- 1) Lift up the paper arm. (Figure 1).
  - When inserting the paper, cut the edge of the paper as shown.
- 2) Place the new paper roll on the arm. The edge of the paper should be positioned as shown (Figure 2).
  - Suitable paper roll – Width: 57mm (2-1/4") / Diameter: 86mm (3-3/8") max.
- 3) Insert the paper into the slit located at the back of the machine as indicated (Figure 3).
- 4) Turn the power switch on. Press the paper feed key  to advance the paper (Figure 4).



## Replacing The Ink Roller

**Note:** Turn power switch off.

- 1) Remove the printer cover by pushing down on the  mark. (Figure 5)
- 2) Hold the left side of the ink roller indicated as “pull up” and lift the ink roller up to remove it. (Figure 6)
  - To maintain clear printing, change the ink roller after about 8 rolls of printing paper have been used.
- 3) Insert a new ink roller into position. (Figure 7)
- 4) Replace the printer cover. (Figure 8)
  - Use only the Ink Roller CP-13
  - Do not attempt to refill the ink roller, since this may cause mechanical difficulties.



## Backup Battery

Memory backup battery retains the currency rate, tax rate, calendar and clock setting, even if the power is off or the AC cord is disconnected.

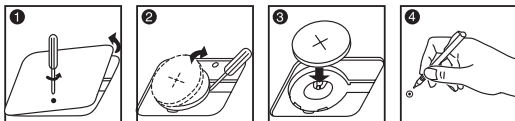
Battery : 1 Lithium battery (Type : CR2032)

Battery life : Backup time 2000 hours

**CAUTION:** Risk of explosion if battery is replaced by an incorrect type.

Dispose of used batteries according to the instruction.

Dispose of batteries according to local regulations. Do not dispose as household waste.



After replace the back-up battery, press the [RESET] button, after resetting be sure to set the currency rate, tax rate, clock and calendar again.

### European Union (and EEA) only.

These symbols indicate that this product is not to be disposed of with your household waste, according to the WEEE Directive (2002/96/EC), the Battery Directive (2006/66/EC) and/or your national laws implementing those Directives.

This product should be handed over to a designated collection point, e.g., on an authorized one-for-one basis when you buy a new similar product or to an authorized collection site for recycling waste electrical and electronic equipment (EEE) and batteries and accumulators. Improper handling of this type of waste could have a possible impact on the environment and human health due to potentially hazardous substances that are generally associated with EEE.

Your cooperation in the correct disposal of this product will contribute to the effective usage of natural resources.

For more information about the recycling of this product, please contact your local city office, waste authority, approved scheme or your household waste disposal service or visit

[www.canon-europe.com/environment](http://www.canon-europe.com/environment).

(EEA: Norway, Iceland and Liechtenstein)



EUROPE ONLY